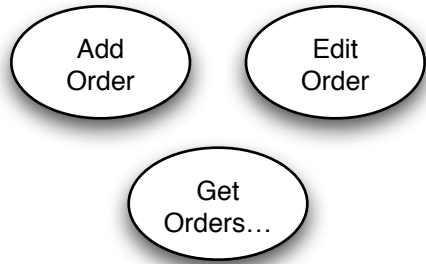
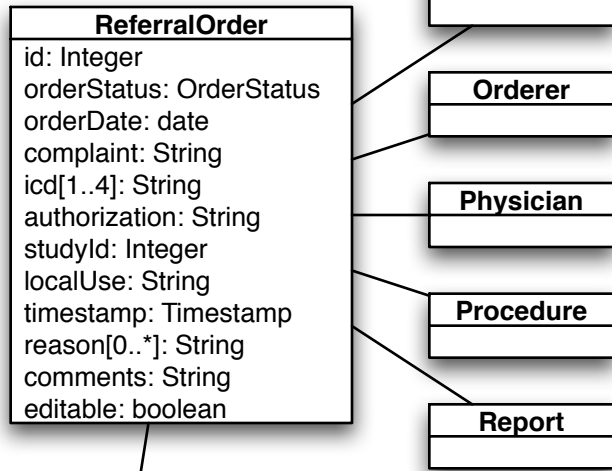


**use case model:**



**data model:**



**rosDBschema.sql:**

```

CREATE TABLE ordertable (
  id serial primary key,
  status character varying NOT NULL,
  orderdate date,
  complaint character varying NOT NULL,
  ...
  procedure integer references procedure,
  studyid integer references study,
  localuse character varying,
  "timestamp" timestamp without time zone,
  comments character varying, ...
);
  
```

**Server Side/Compile Time**

**OrderDelegate.java:**  
adds some business logic

**OrderSessionBean.java:**  
• Java class definition  
• Xdoclet tags for EJB

**OrderDao.java:**  
Java DAO interface

**OrderSessionHome.java:**  
EJB home interface



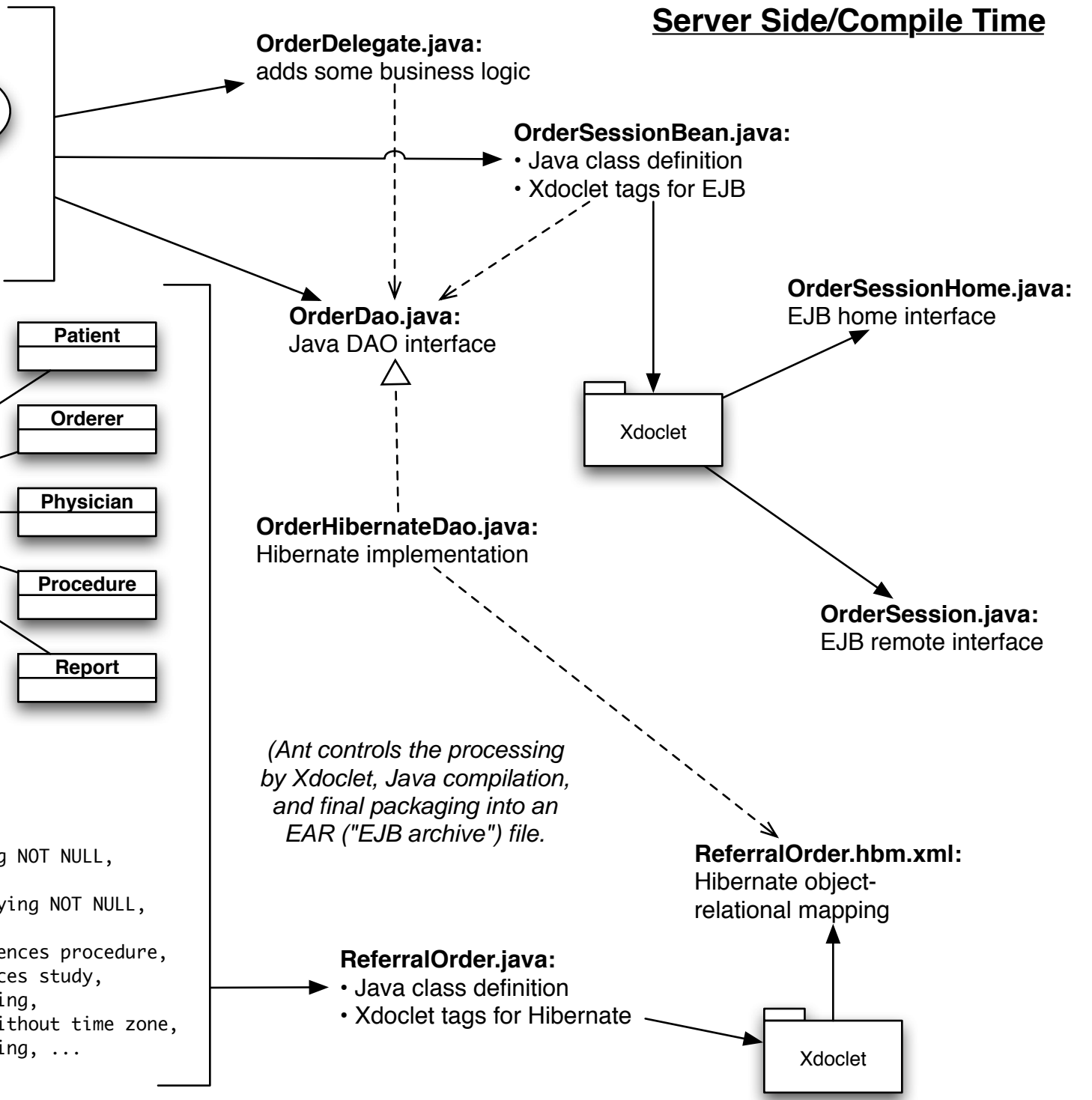
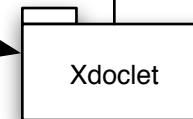
**OrderHibernateDao.java:**  
Hibernate implementation

**OrderSession.java:**  
EJB remote interface

*(Ant controls the processing by Xdoclet, Java compilation, and final packaging into an EAR ("EJB archive") file.)*

**ReferralOrder.hbm.xml:**  
Hibernate object-relational mapping

**ReferralOrder.java:**  
• Java class definition  
• Xdoclet tags for Hibernate



# "Client" Side/Runtime

